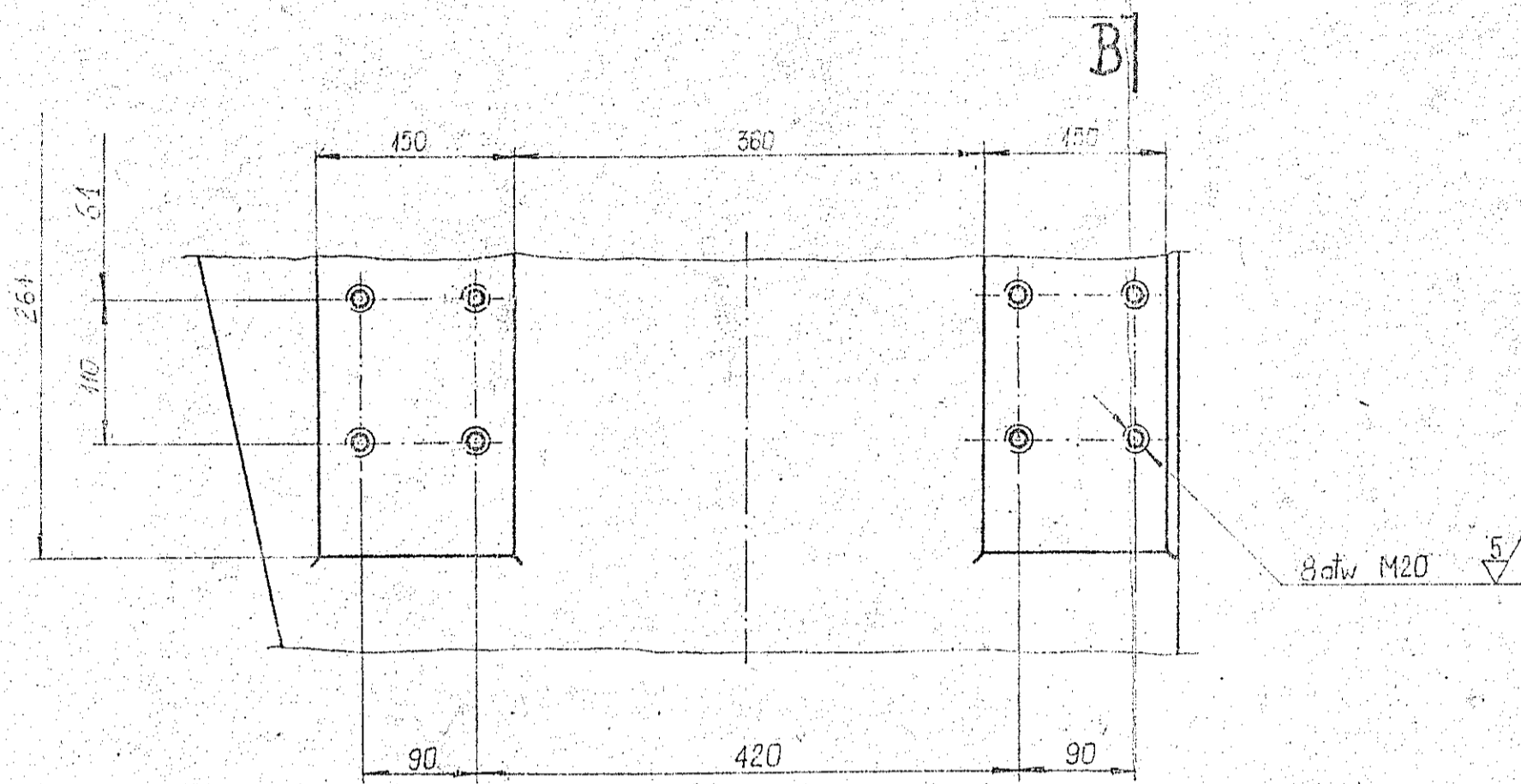


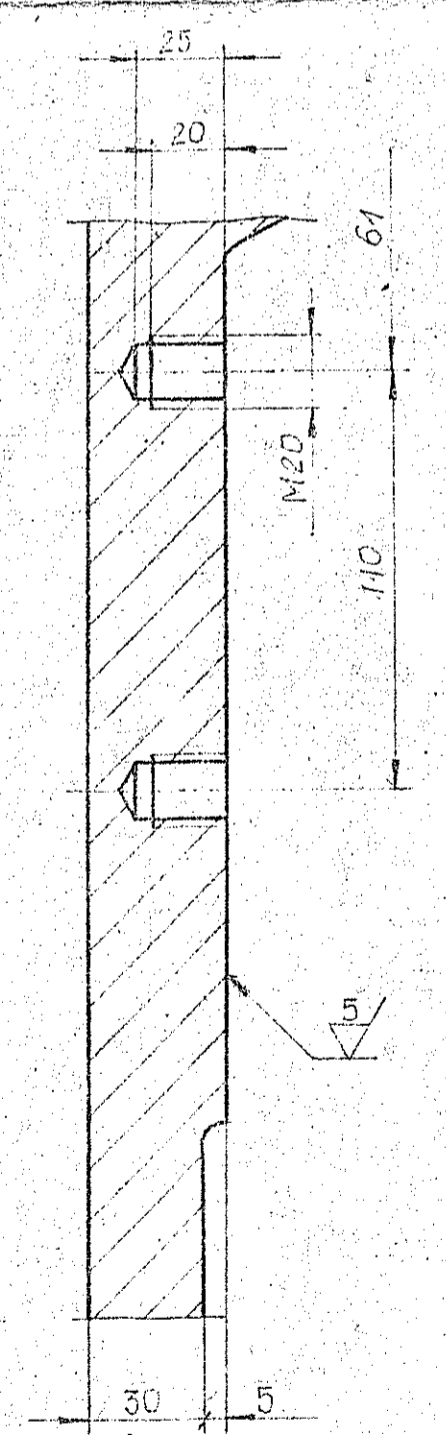
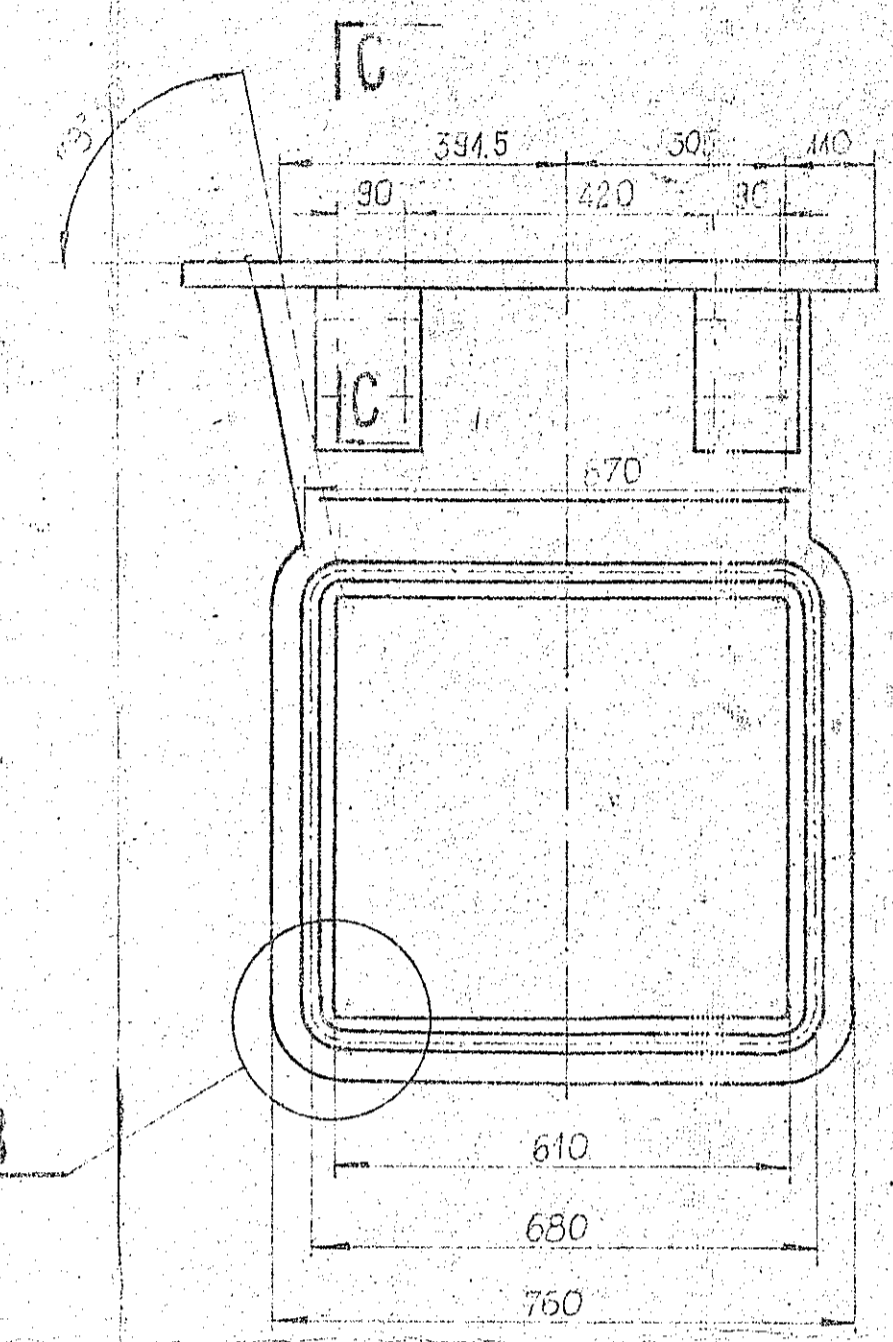
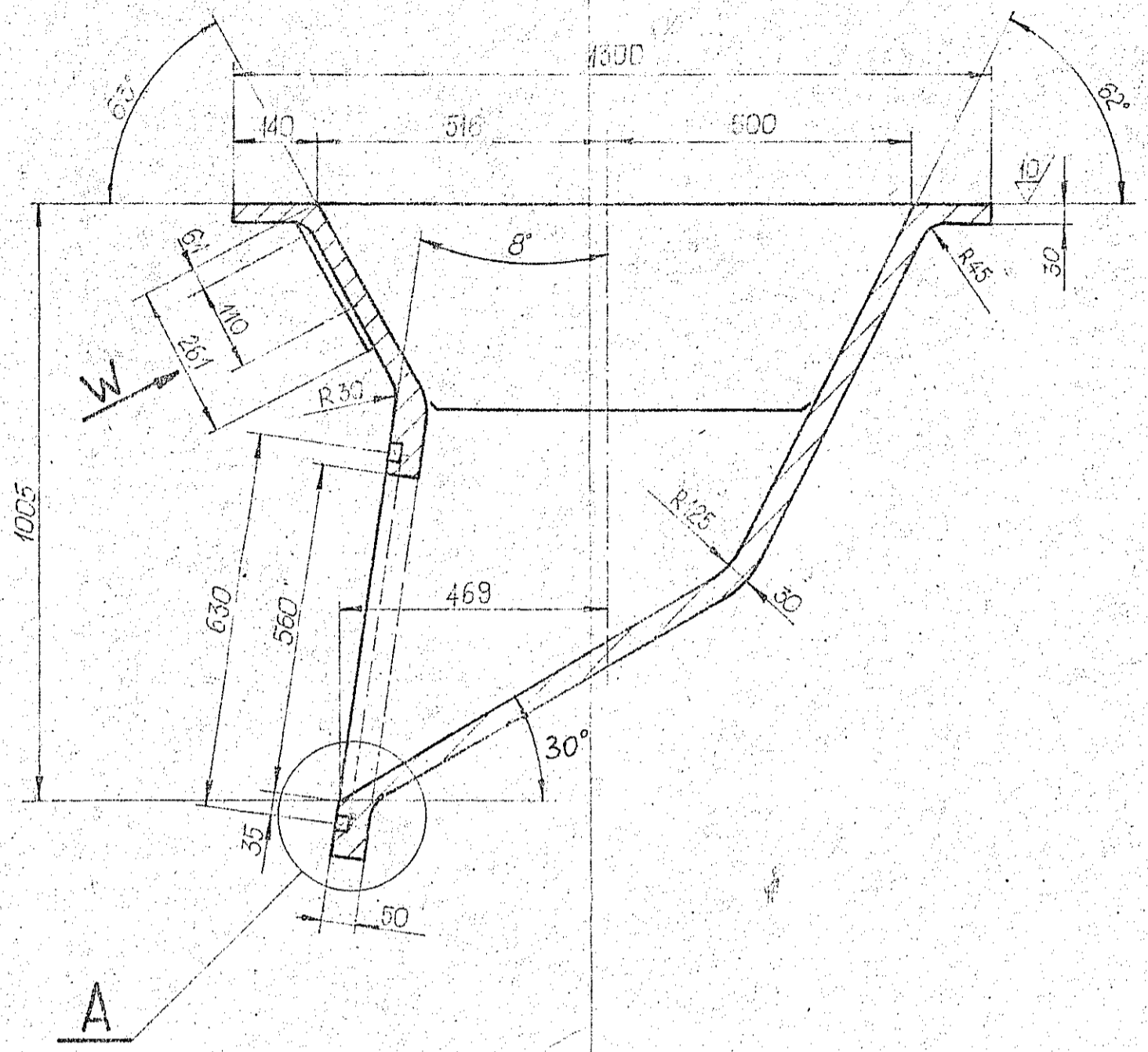
30/20/40/5/

A-A

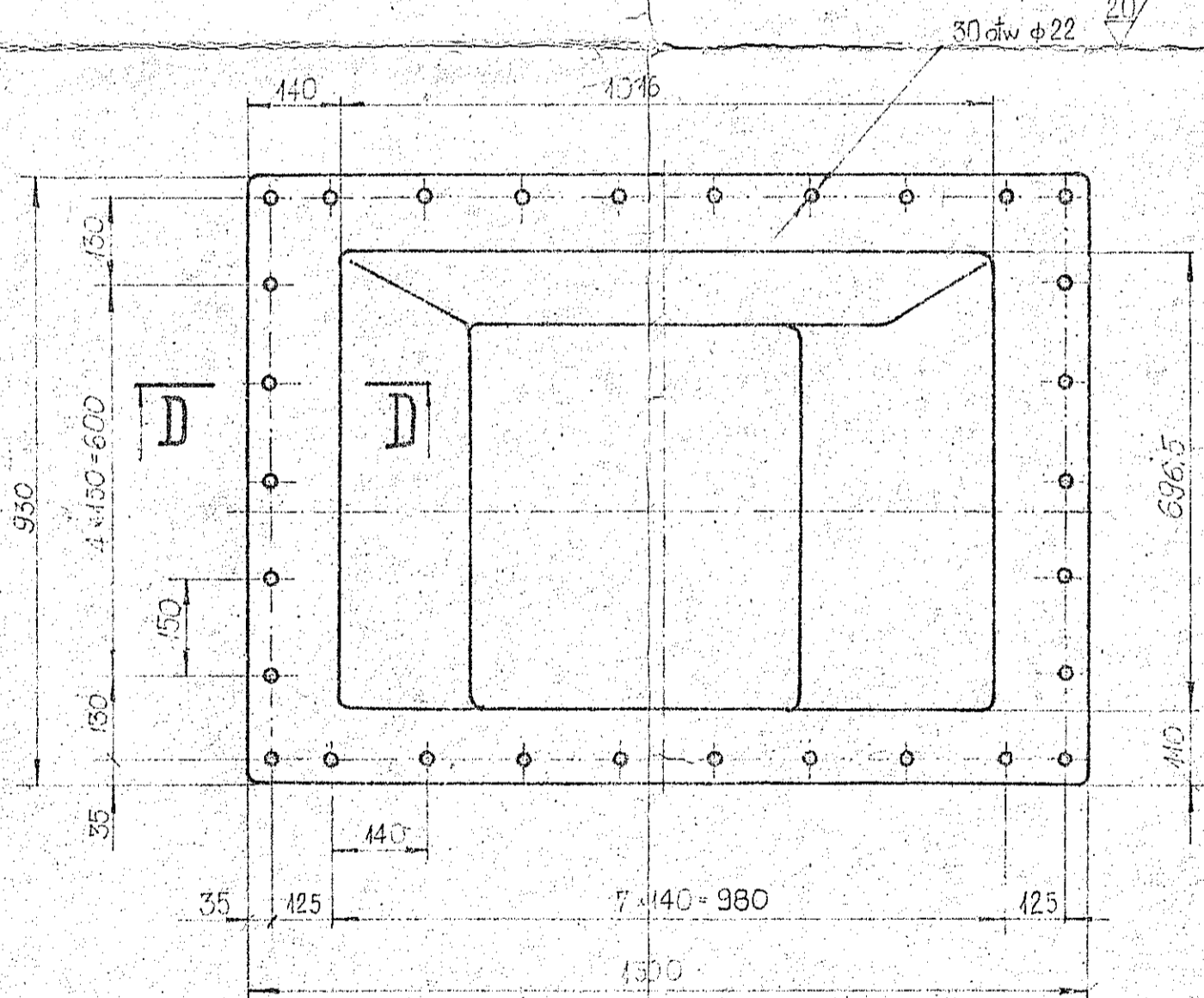
W
1:5



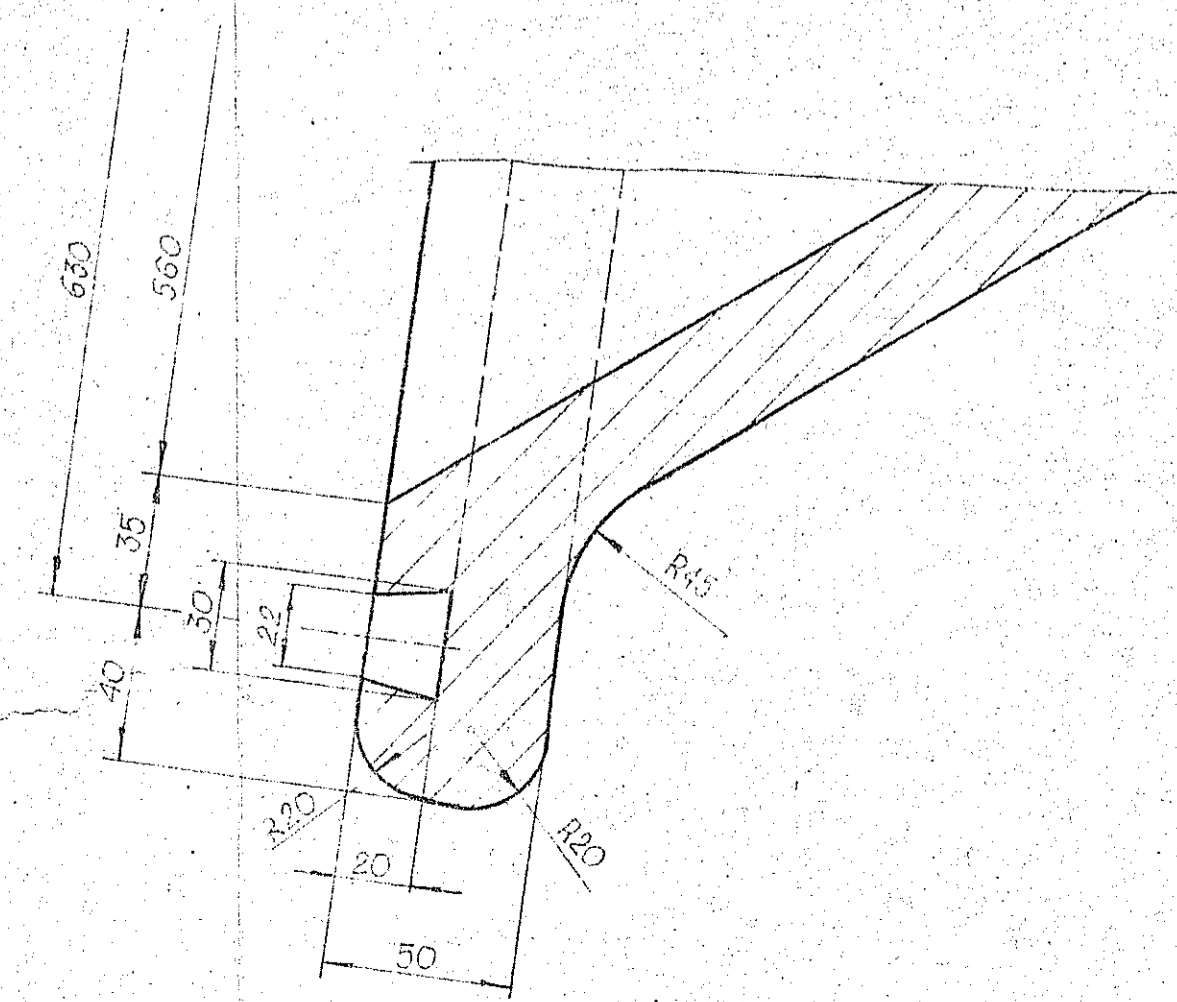
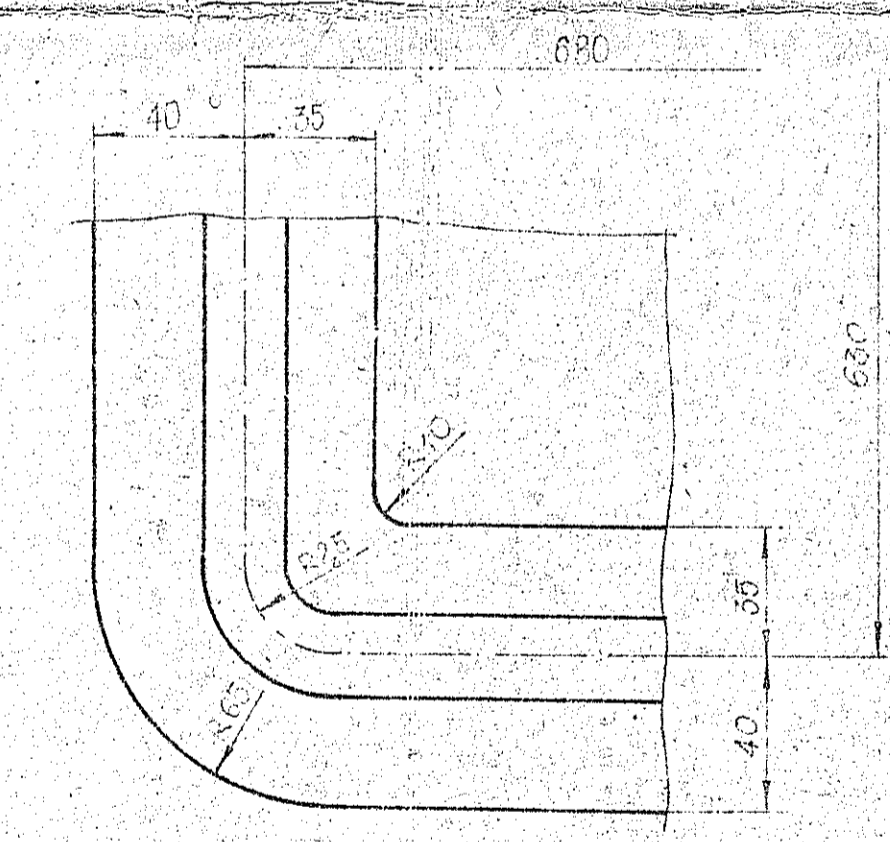
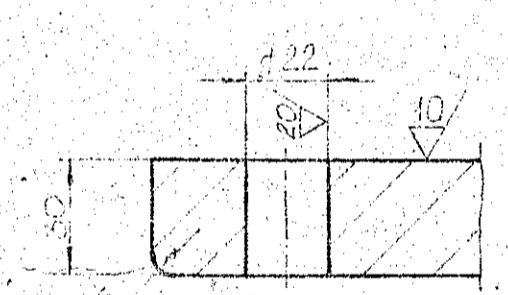
B-B
1:2



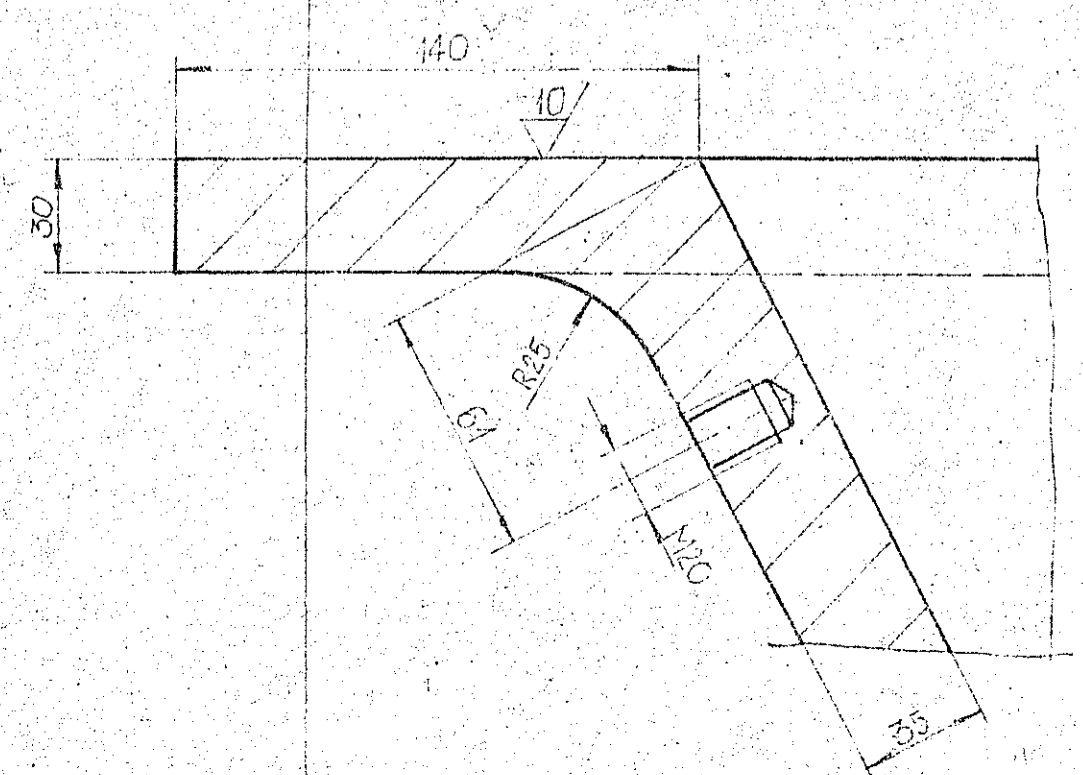
A
1:2



D-D
1:2



C-C
1:2



Uwaga

1. Promienie odlewnicze nieoznaczone wykonać R10
2. Odlew wykonać zgodnie z warunkami technicznymi odbioru dla odlewów staliwanych.

— Odlew stalowy		1	LH23N18	PN-75/H-93159	710-710-
Rodzaj części		710			
Podzespół koku nr 2		440			
Lej wyładawczy część dolna		[initials]		[initials]	
[wykonanie grawe]		[initials]		[initials]	
PSP-2		III D		022-02-02 1-2172 III D-022-02	